



**Hyb
Cymorth
ACE**

**Hyrwyddo a
Herio dros
Newid**

**Champion &
Challenge
for Change**

**ACE
Support
Hub**

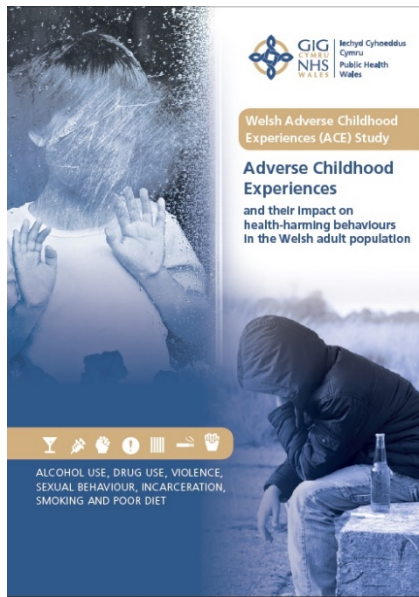
15/05/2018

Creating an Ace Aware Youth Workforce for Wales

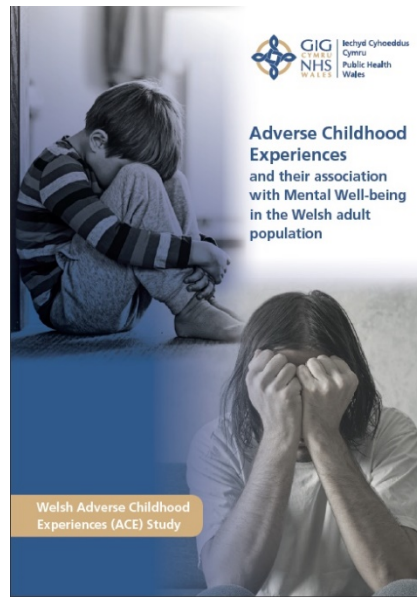
Laura Tranter

Community Engagement Relationship Lead, ACES Support Hub

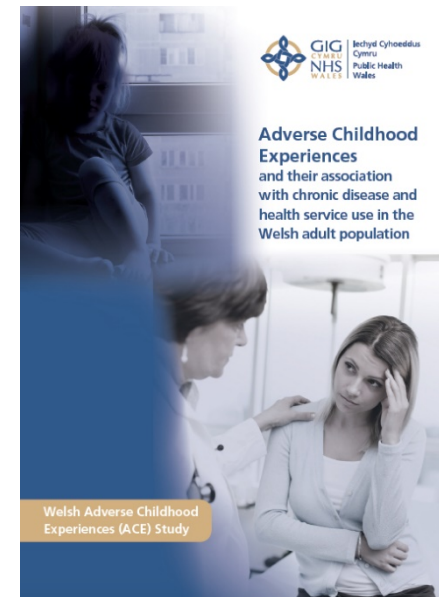
Welsh ACE Study – PHW Report



Health Harming



Mental Well-being



Chronic disease

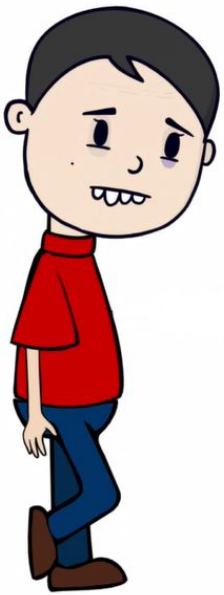


**Hyrwyddo a
Herio dros Newid**



**Champion & Challenge
for Change**

What are ACEs?



Adverse Childhood Experiences

(ACEs) are stressful experiences occurring during childhood that directly harm a child (e.g. sexual or physical abuse) or affect the environment in which they live (e.g. growing up in a house with domestic violence).

Bellis et al 2016



Hyrwyddo a
Herio dros Newid



Champion & Challenge
for Change

Welsh Case Study - Exposure

How many adults in Wales have been exposed to each ACE?

CHILD MALTREATMENT



Verbal abuse
23%



Physical abuse
17%



Sexual abuse
10%

CHILDHOOD HOUSEHOLD INCLUDED



Parental
separation
20%



Domestic
violence
16%



Mental
illness
14%



Alcohol
abuse
14%



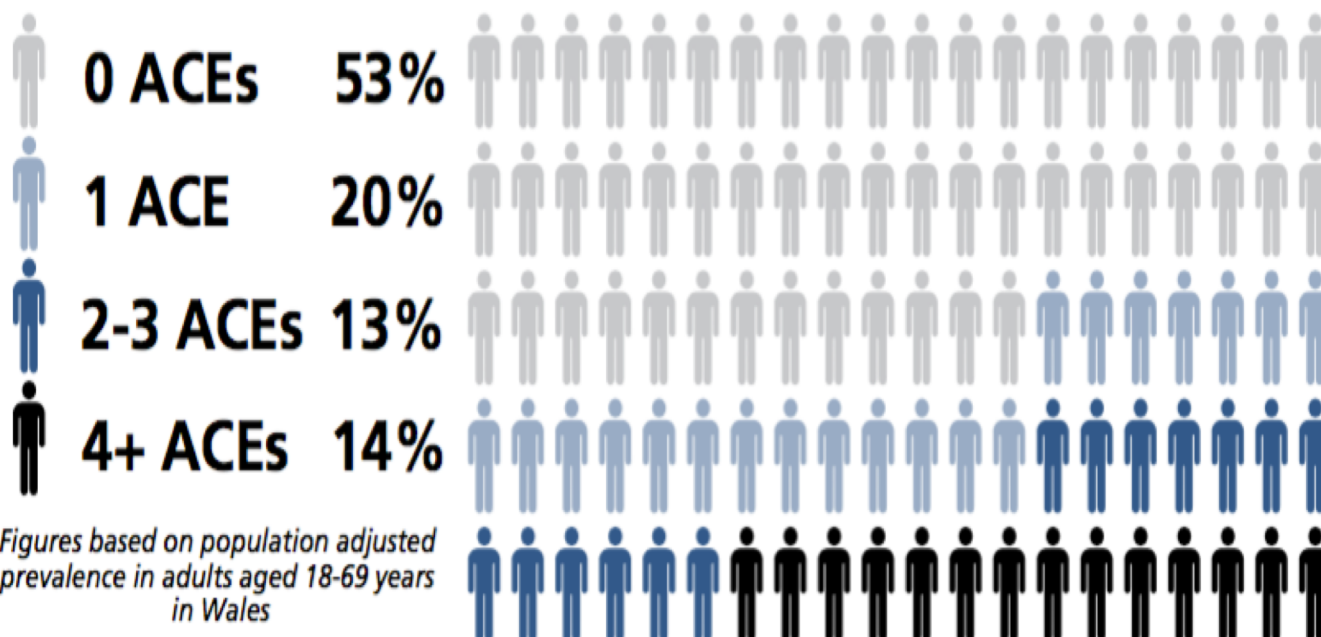
Drug
use
5%



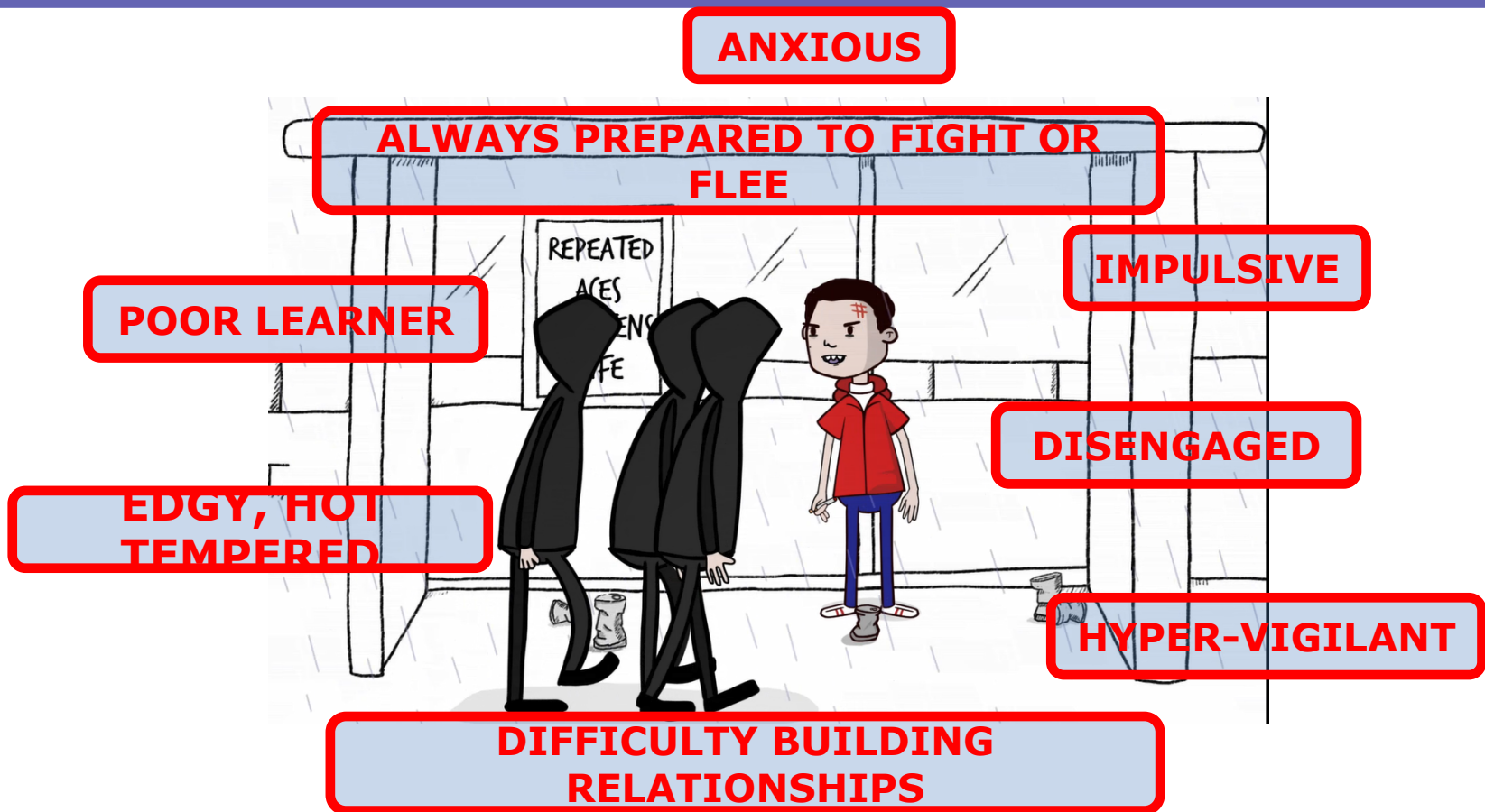
Incarceration
5%

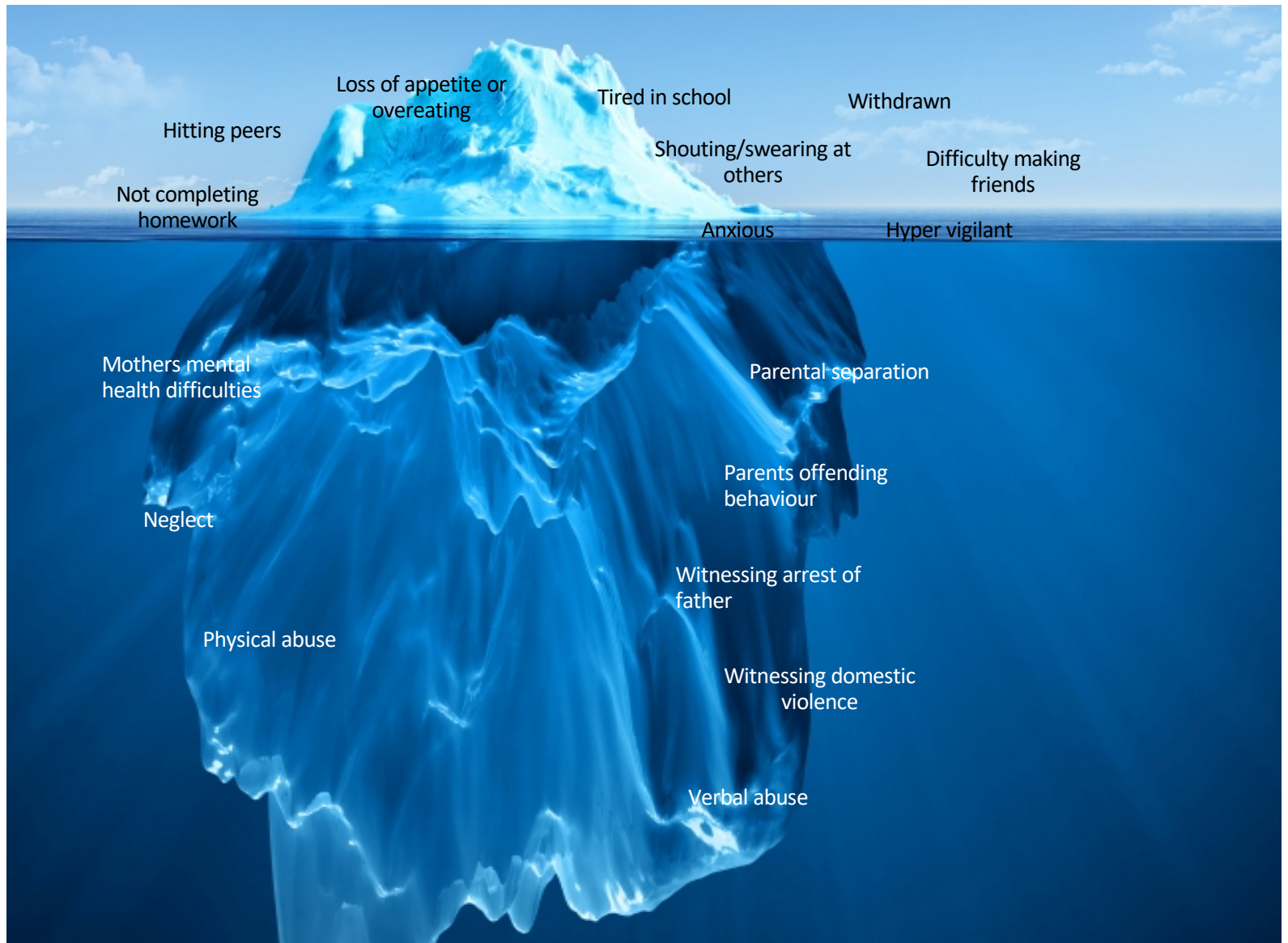
Welsh ACE Study - Prevalence

For every 100 adults in Wales 47 have suffered at least one ACE during their childhood and 14 have suffered 4 or more.

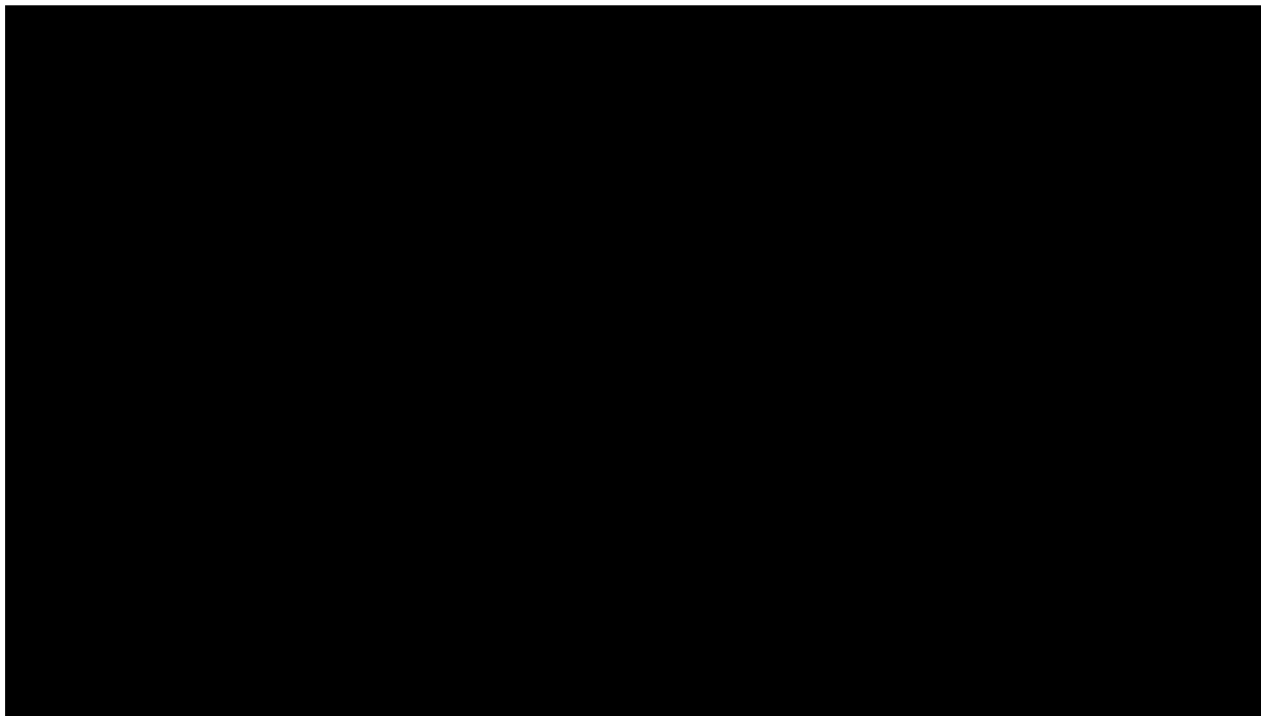


ACEs & Young People





Resilience animation

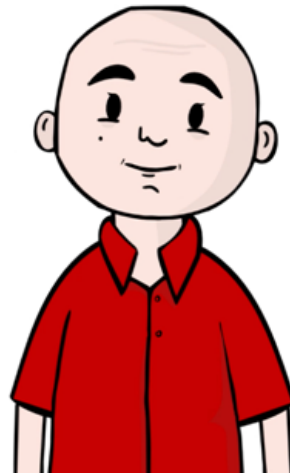


ACEs – Breaking the Cycle

Protective Factors **The building blocks of resilience**

**One or more
stable, caring
child-adult
relationship**

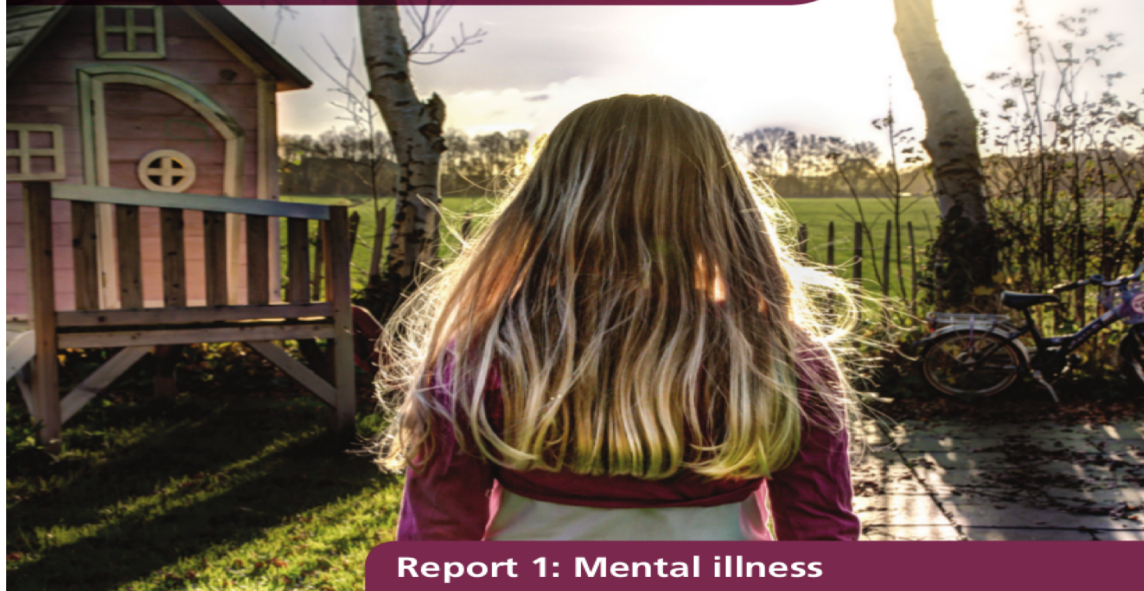
**Equipped to
manage your
behavior and
emotions**



**Feel you can
overcome
hardship and
guide your
destiny**

**Involved and
connected**

Sources of resilience and their moderating relationships with harms from adverse childhood experiences



Report 1: Mental illness

Welsh Adverse Childhood Experience (ACE)
and Resilience Study

Karen Hughes, Kat Ford, Alisha R. Davies, Lucia Homolova, Mark A. Bellis

www.publichealthwales.org

Creating an ACE aware youth workforce for Wales

- Advisory Board established WLGA, YJB, CWWYS, PYOG
- Training developed and co facilitated by Jain Boon Theatre Director.
- Train the trainer model – Champions for change
- 5 dates delivered:
 - Local Authority Youth workers
 - Youth Offending Team staff
 - Third Sector Youth Services
 - Young Peoples workers

ACE Support Hub: Get in touch



**Hyrwyddo a
Herio dros
Newid**

**Champion &
Challenge
for Change**



@acehubwales



www.facebook.com/acehubwales/



ACE@wales.nhs.uk